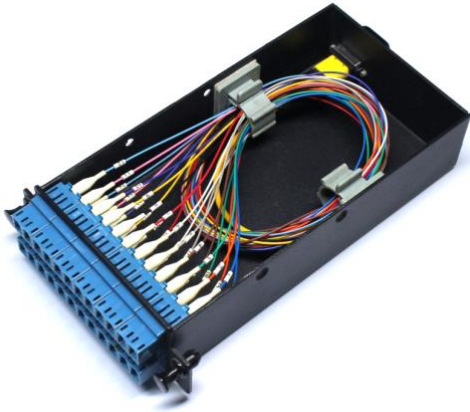




MPO/MTP® MODULE



FEATURES

- MTP® (US Conec) brand or MPO standard compliant multifiber connector
- MPO/MTP® connector on one end, with LC or SC connectors on the other end
- 4, 8, 12 and 24-fiber with multimode and single mode options
- Connectors' designs comply with IEC standards (MPO/MTP®: IEC 61754-7; LC: IEC 61754-20; SC: IEC 61754-4)
- LSZH, OFNP, OFNR cable jacket types selection
- Rapid deployment, high density and high reliability
- Extremely low insertion loss and high return loss
- Telcordia GR-1435-CORE issue 2 compliant
- RoHS and REACH materials compliant

OPTICAL CHARACTERISTICS (applied to 12c MPO/MTP® connector)

Item	Parameter		Reference
	Standard single mode	Standard multimode	
Insertion loss typ.	≤ 0.1dB	≤ 0.05dB	IEC 61300-3-4
Insertion loss max.	≤ 0.25dB	≤ 0.15dB	
Return loss	≥ 65dB (APC); ≥ 50dB (UPC)	≥ 35dB	IEC 61300-3-6

OPTICAL CHARACTERISTICS (applied to LC and SC connector)

Item	Parameter		Reference
	Single mode	Multimode	
Insertion loss	Random mated average ≤ 0.07dB; Random mated for 97% ≤ 0.12dB	Random mated average ≤ 0.05dB; Random mated for 97% ≤ 0.10dB	IEC 61300-3-34
Return loss	≥ 70dB (APC); ≥ 55dB (UPC)	≥ 45dB	IEC 61300-3-6

END-FACE GEOMETRY (applied to 12c MPO/MTP® connector)

Item	Parameter	Reference
Minus Coplanarity	≤ 200nm	IEC 61755-3-31:2015
Ferrule Surface X-Angle	-0.075° to +0.075°	
Ferrule Surface Y-Angle	7.8° to 8.2°	
Fiber Height	1300nm to 1800nm	
Fiber Differential Height-All	≤ 200nm	
Fiber Differential Height-Adj.	≤ 150nm	
Fiber Tip Spherical Radius	≥ 1mm	
Ferrule Surface X-Radius	≥ 2000mm	
Ferrule Surface Y-Radius	≥ 50mm	
Core Dip (for MM)	0 to 100nm	
Geometry Limit	≤ 10	



END-FACE GEOMETRY (applied to LC connector)

Item	PC (Ref: IEC 61755-3-1)	APC (Ref: IEC 61755-3-2)
Radius of curvature (mm)	7 to 15	6 to 12
Fiber height (nm)	-30 to 30	-30 to 30
Apex offset (µm)	0 to 30	0 to 30
APC angle (°)	/	7.8 to 8.2
Key error (°)	/	-0.2 to +0.2

END-FACE GEOMETRY (applied to SC connector)

Item	PC (Ref: IEC 61755-3-1)	APC (Ref: IEC 61755-3-2)
Radius of curvature (mm)	10 to 15	6.5 to 9
Fiber height (nm)	-30 to 30	-30 to 30
Apex offset (µm)	0 to 30	0 to 30
APC angle (°)	/	7.8 to 8.2
Key error (°)	/	-0.2 to 0.2

END-FACE QUALITY (SM)

Zone	Range (µm)	Scratches	Defects	Reference
A: Core	0 to 25	None	None	IEC 61300-3-35:2015
B: Cladding	25 to 115	None	None	
C: Adhesive	115 to 135	None	None	
D: Contact	135 to 250	None	None	
E: Rest of ferrule		None	None	

(Only Zone A and Zone B are applied to MPO/MTP® connector)

END-FACE QUALITY (MM)

Zone	Range (µm)	Scratches	Defects	Reference
A: Core	0 to 65	None	None	IEC 61300-3-35:2015
B: Cladding	65 to 115	None	None	
C: Adhesive	115 to 135	None	None	
D: Contact	135 to 250	None	None	
E: Rest of ferrule		None	None	

(Only Zone A and Zone B are applied to MPO/MTP® connector)

CONNECTOR TYPES

Type	Reference	Note
MPO/MTP®	IEC 61754-7	Boot Color: Black Body Sleeve: MM (Beige, Aqua, Magenta), SM (Green, Yellow)
LC	IEC 61754-20	Single mode simplex APC: Green connectors, Green boots (for 0.9mm) / White boots (for 2.0/3.0mm) UPC: Blue connectors, White boots
		Single mode duplex APC: Green connectors, Green boots (for 0.9mm) / White boots (for 2.0/3.0mm) UPC: Blue connectors, White boots
		Multimode simplex PC: Grey Connectors, White boots
		Multimode duplex PC: Grey Connectors, White boots
SC	IEC 61754-4	Single mode simplex APC: Green connectors, Green boots UPC: Blue connectors, Blue boots
		Multimode simplex PC: Grey Connectors, Grey boots

MECHANICAL CHARACTERISTICS

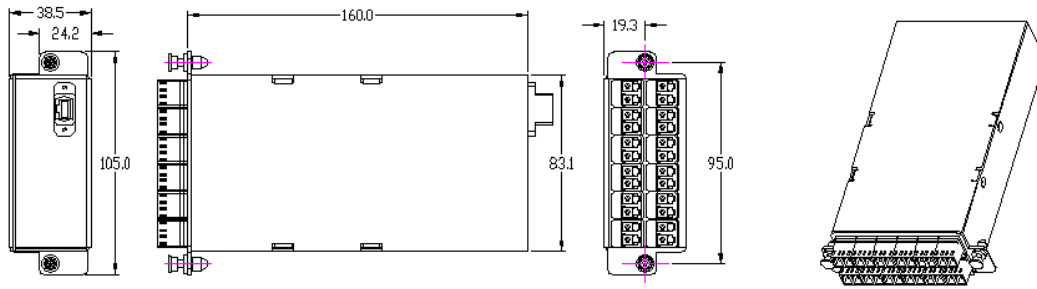
Item	Parameter
Mating cycles	ΔIL ≤ 0.2dB (for 500 mates)

ENVIRONMENTAL CHARACTERISTICS

Item	Parameter
Operating temperature	-10°C to +60°C
Storage temperature	-20°C to +70°C



CASSETTE'S DRAWINGS



****CAN BE CUSTOMIZED****